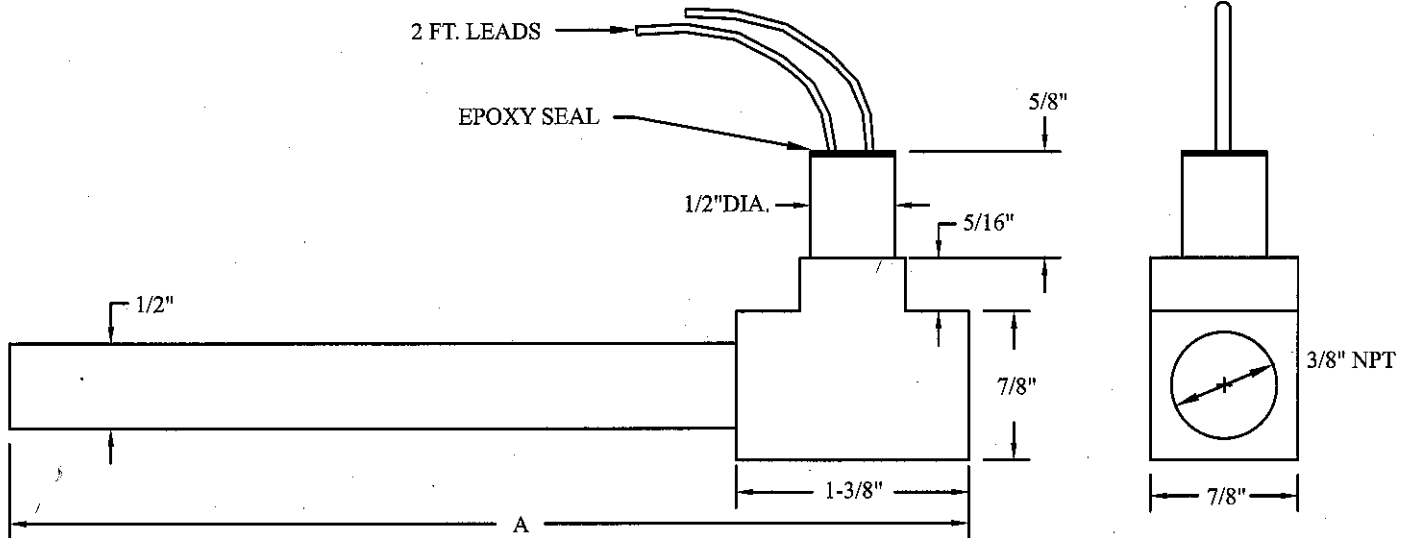


Flameless Electric Air Heaters: Metal Shell Air Heaters

These fast responding heaters deliver up to 1400°F air temperatures through a protective metal shell. The element design insures faster response, higher temperature, and longer life than any other heater of this type on the market today.



Features:

- Air temperatures up to 1400°F
- Flow rates up to 400 SCFH
- Long life
- Fast response
- Choice of five wattages up to 1250 watts

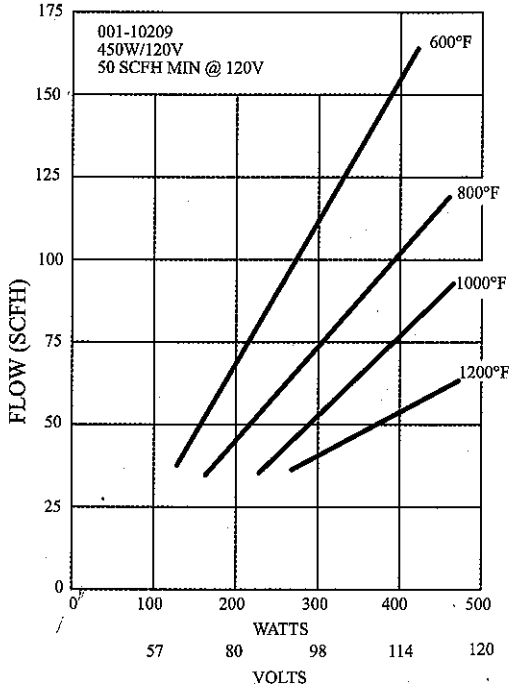
Construction:

- 1/2" diameter 304 stainless steel body
- Copper tee with 3/8" NPT air connection
- Epoxy sealed 2 Ft. leads
- High temperature ferrous alloy element

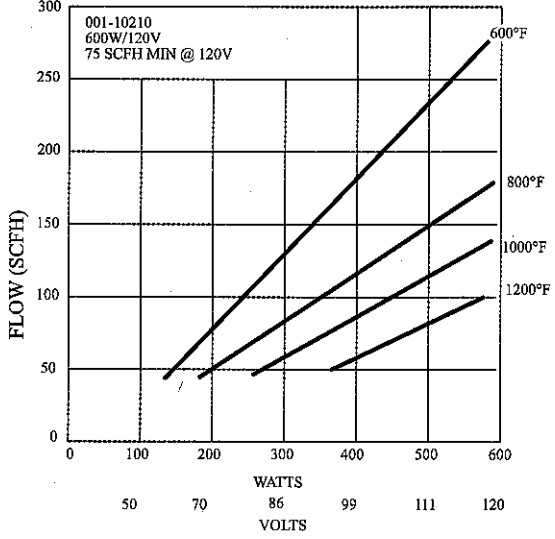
Part Number	Watts	Volts	A	Min Flow © 120V
001-10209	450	120	7-3/8"	50 SCFH
001-10210	600	120	7-3/8"	75 SCFH
001-10211	800	120	8-3/8"	110 SCFH
001-10212	1000	120	8-3/8"	130 SCFH
001-10213	1250	120	8-3/8"	180 SCFH

Flameless Electric Air Heaters: Performance Characteristics of Metal Shell Air Heaters

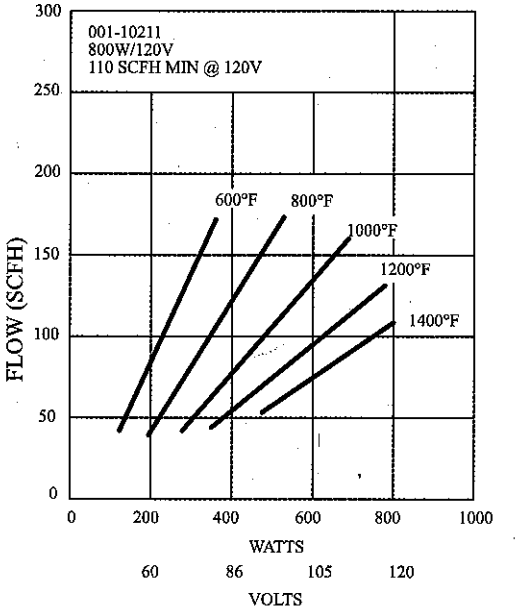
Part # 001-10209



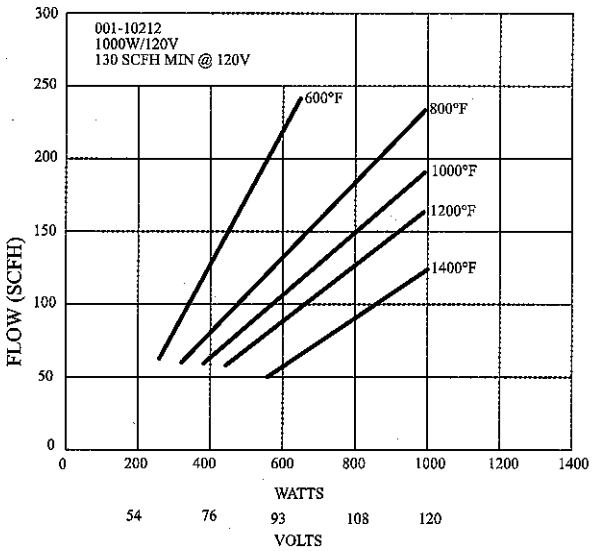
Part # 001-10210



Part # 001-10211



Part # 001-10212



Part # 001-10213

