

PowerStar
electric tankless water heaters

New!

Now with a solid copper
heat exchanger



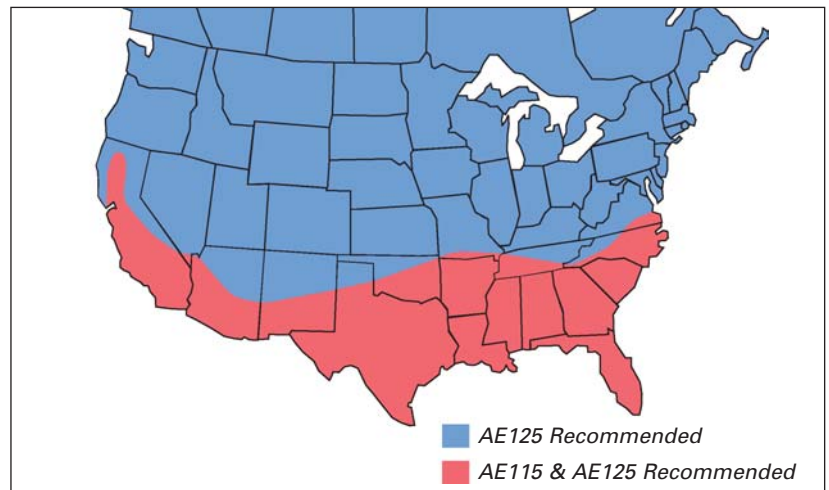
The PowerStar electric tankless water heater is designed to replace your electric storage tank heater.

- **Endless Hot Water** – operating one application at a time, the PowerStar will never run out of hot water.
- **Energy Efficient.**
- **Built to Last** – never worry about rust and sediment build-up again.
- **Saves Space** – can fit just about anywhere!
- **10-Year Warranty.**

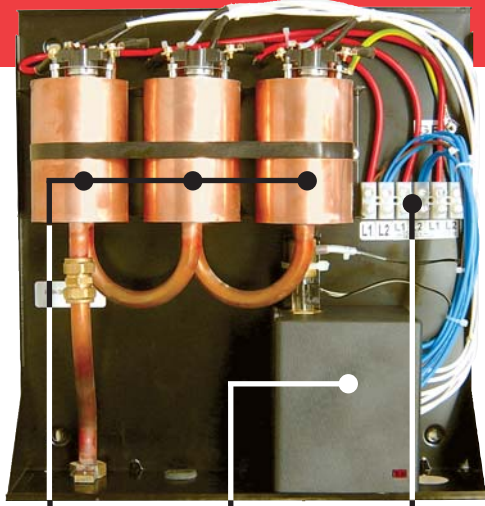
Tankless Performance Electric Convenience

How PowerStar Works

Instead of heating and reheating water, as with a tank heater, PowerStar heats water only when the hot water tap is open. Flowing water triggers powerful electric heating modules that heat the water as it passes through the heat exchanger. The heating modules activate in series, so electricity use is proportional to demand, saving still more energy. The result is a steady flow of hot water for as long as you need it – without the wasted energy of keeping water hot when you're not even using it.



Model AE115 is not recommended in climates where average annual ground water temperature is less than 60°F.



PowerStar Features

- 95% efficiency rating
- Solid copper heat exchanger
- Electronic flow switch
- 3/4" brass male NPT fittings
- External temperature control knob
- Activation rates of .6 gallons per minute (AE115) and .8 gpm (AE125)
- Filter screen on inlet
- Thermal cut-out for safety
- No temperature/pressure relief valve necessary (check local codes)
- Flow sensor to provide a constant output temperature

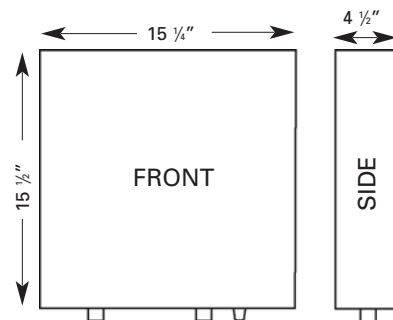
MODEL	AE115	AE125
Energy Factor	.95	.95
Efficiency	95%	95%
Weight	20 lbs.	22 lbs.
Dimensions	15 1/4" x 15 1/2" x 4 1/2"	15 1/4" x 15 1/2" x 4 1/2"
Water Fittings	3/4" male NPT	3/4" male NPT

ELECTRICAL REQUIREMENTS		
Volts	240/208v	240/208v
Kilowatts	17.25/13kw	26.85/20kw
Amps	80/69 (2 x 40 amps)	120/101 (3 x 40 amps)
Wire Size	8 gauge (4 conductors & ground)	8 gauge (6 conductors & ground)

MAXIMUM FLOW RATE AT GIVEN TEMPERATURE RISE		
Average ground water temperature in the United States is 55°F		
45°F temperature rise	2.6 gpm	4.0 gpm
50°F temperature rise	2.3 gpm	3.7 gpm
60°F temperature rise	2.0 gpm	3.0 gpm
70°F temperature rise	1.7 gpm	2.6 gpm
80°F temperature rise	1.5 gpm	2.2 gpm

NOTE: The unit will not provide an output temperature above 131°F.

FIXTURE TYPE	AVERAGE FLOW (GPM)	AVERAGE TEMP.
Shower	1.5 - 2.5	104°F
Bathtub	2.5 - 4.0	102°F
Washing Machine	2.0 - 3.0	120°F
Sink	0.8 - 2.0	110°F



* Specifications and product information subject to change without notice.



Controlled Energy Corporation
 340 Mad River Park, Waitsfield, VT 05673
 Phone: 800-495-1778 Fax: 802-496-6924
www.ControlledEnergy.com



With more than 25 years of experience selling tankless water heaters, *Controlled Energy Corporation* provides unmatched knowledge and service to its customers.