

Programmable Touchscreen HMI

Nematron PowerView™ is our family of HMI operator interface panels designed to bring you the best value in a cost-effective HMI. PowerView is ideal for applications with the need to display machine or process information graphically. A comprehensive library of drivers supports a broad range of PLCs and Motion Controllers.

PowerView HMIs are programmed with Nematron ViewBuilder, easy-to-use configuration software that can be downloaded free of charge from our Web site. ViewBuilder provides a powerful set of tools to allow simple to complex applications to be built. Tools include: graphical screen generator with Symbol Factory 2.0 library subset, alarms, trends, bar graphs, multi-state indicators, security, event logging, recipes, animation, popup windows, math and macro capability. Includes on-line and off-line simulation, simplifying the development task.



Wide range of display sizes to meet your needs!



Two ways to test your HMI applications without uploading every change: use simulated I/O within the ViewBuilder software, or get real I/O by connecting to your PLC through the PowerView unit.



Nematron PowerView also supports master/slave communications, allowing multiple HMIs to interface with a single PLC or Servo Controller through a shared serial connection.

Base Specifications

- Up to 200 MHz Intel® XScale processor with 4 MB DRAM
- Up to 2 MB non-volatile memory, for programs and recipes
- RS-232 and RS-485 serial ports
- Parallel port (ECP/EPP) on larger models
- Real-time clock with watchdog timer
- High-resolution analog resistive touchscreen
- 24VDC operation (direct input or 120VAC adapter)
- CE Mark and FCC Part 15 Class A
- Designed to be NEMA 4/12 and IP65 at the front panel when properly mounted in an enclosure

Configuration Software

- Nematron ViewBuilder software can be downloaded free of charge from Web site (www.nematron.com)
- Includes popular subset of Symbol Factory 2.0 object library



CHOOSE FROM SIX BASE MODELS:

| Model | Display | Resolution | Cutout W x H | Depth |
|----------|------------------|----------------|--------------------------------------|-----------------|
| PV-570L | 5.7" monochrome | ¼VGA (320x240) | 7.56 in x 5.43 in (192 mm x 138 mm) | 1.52 in (39 mm) |
| PV-570S | 5.7" color STN | ¼VGA (320x240) | 7.56 in x 5.43 in (192 mm x 138 mm) | 1.52 in (39 mm) |
| PV-570T | 5.7" color TFT | ¼VGA (320x240) | 7.56 in x 5.43 in (192 mm x 138 mm) | 1.52 in (39 mm) |
| PV-770S | 7.7" color DSTN | VGA (640x480) | 8.75 in x 6.57 in (222 mm x 167 mm) | 1.92 in (49 mm) |
| PV-1040S | 10.4" color DSTN | VGA (640x480) | 11.89 in x 8.86 in (302 mm x 225 mm) | 2.11 in (54 mm) |
| PV-1040T | 10.4" color TFT | VGA (640x480) | 11.89 in x 8.86 in (302 mm x 225 mm) | 2.11 in (54 mm) |



Nematron PowerView HMI

PowerView Drivers and Controllers Supported

PLCs - Serial Protocols

- AB: DF1, DH485, PLC5, MicroLogix, ControlLogix
- Aromat: FP0, FP1, FP2, FP3, FP10SH, FPM
- Bristol Babcock: Network 3000, ControlWave
- Control Microsystems: SCADAPack
- Delta DVP
- Fuji: NB Series
- GE SNP-X
- Hitachi
- IDEC Micro
- Keyence: KV Series
- Koyo: K-Sequence
- LG Glofa Cnet, K10S1, K60S, Master-K 300S CPU, Master-K Cnet
- Matsushita: FP
- Mitsubishi: A Series, Melsec FX Series
- Omron: HostLink, Omron (485 2W)

- Samsung SPC-10
- Siemens S7/200, S7/300 HMI Adaptor, S7/300 PC Adaptor
- Simatic TI505
- Sharp: JW Series
- Telemecanique Unitelway
- Toshiba T Serial

Modbus RTU

- Modbus: RTU, Network (RTU 485 2W), Extended, RTU Server
- Entertron Industries
- Giddings & Lewis
- Industrial Control Links
- International Parallel Machines
- Motorola (MOSCAD Family)
- Sixnet (SixTrak, Versatrak)
- Watlow Electric (CAS200, CLS200, MLS300, PPC2000 Families)

Other Serial Protocols

- ASCII

Motion Control Drivers

- Electric Motor Systems: Modus (G5)
- Emerson: Modbus (Axima, EN, Epsilon)
- IIS ESC
- Jetter Nano
- Lenze
- SAF: Modbus (OEM Sapphire)
- Safronics: Modbus (VG5)
- Trio Motion: Modbus (MC202, MC206, MC216, Euro205)
- Whedco: Modbus Extended (IMC, IMJ, S2K)
- Yaskawa: Memobus (MP Series)

Ordering Information

Nematron products are available worldwide through our network of factory-authorized distributors. For distributor contact information, please visit our website at www.nematron.com or call Nematron's Customer Care Center at the nearest regional sales office to you.

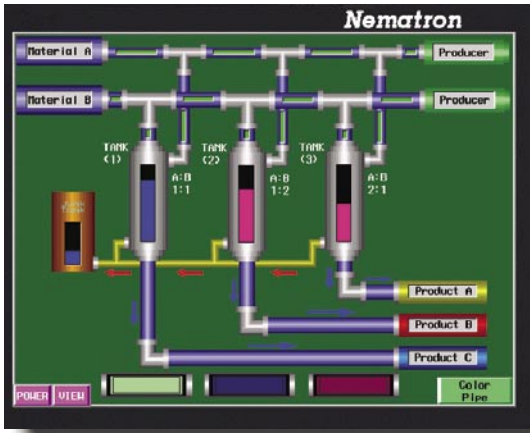
Nematron Delivers Total Solutions For Industrial Automation

Scalable industrial automation solutions are what Nematron delivers. With a full line of open architecture PCs, HMI/SCADA and PC-based Control software, PLC HMIs and Operator Panels, Nematron has the expertise to deliver powerful, flexible and cost-effective total automation solutions. During Nematron's 20-year history, over 125,000 systems have been installed including over 7,000 PC-based control systems and 20,000 HMI/SCADA systems. Nematron's customers take advantage of reduced life-cycle costs, improved machine/process flexibility, easier re-tooling/parts changeover, plus data integration from the plant floor into the enterprise. For complete product specification and more information on Nematron, please visit our Web site at www.nematron.com.

- Rugged Industrial PCs
- Touchscreen HMIs
- Operator Panels
- Graphical Workstations
- Industrial Monitors
- OpenView HMI/SCADA S/W
- OpenControl PC-Control S/W
- HyperKernel Real-time Extension for WinNT/2K
- Embedded Controllers
- Ethernet I/O
- Control System Design, Project Management and Installation Support

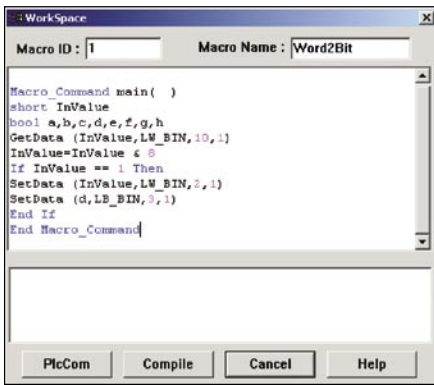
Programming Software for PowerView

Nematron ViewBuilder is our programming software for the PowerView and PowerView/E families of touchscreen HMIs. It is an easy-to-learn and use software package that allows you to build powerful HMI applications, whether the application is for machine or process control.



Advanced graphics with Symbol Factory® subset

HMI screen development is done on a PC or laptop, and the application can be tested through an off-line simulator that can simulate PLC I/O. Downloading to the HMI unit is not required for off-line simulation.



Do math and logic with BASIC-like scripting

ViewBuilder can be downloaded free of charge from our Web site at www.nematron.com!

Features

- Easy-to-use graphical interface
- Up to 2,000 display pages
- Complete set of drawing tools (lines, circles, arcs, rectangles, polygons, text, etc.)
- Supports pop-up displays
- Supports bitmapped graphics
- Displays in portrait or landscape mode
- Supports animation
- Supports multi-state objects
- Includes subset of Symbol Factory 2.0* object library (e.g. switches, indicator lamps, meters, pipes, pumps, motors, valves, tanks, machines, etc.)

HMI Functions

- Alarm and Event Management System
- Trending with up to 16 pens
- Bar Graphs
- Recipes
- Reports
- Whiteboard (message board)
- Security System
- Macros: BASIC-like scripting with ability to read/write to PLC registers, perform math, resolve logical expressions

Drivers

- Serial drivers to all popular PLCs: A-B/Rockwell (DF1, DH485), Modicon (Modbus), GE, Siemens, Koyo, C-H, Mitsubishi, Omron, many others
- Serial ASCII driver
- Master/Slave HMI (serial or Ethernet)
- Ethernet drivers (PowerView/E required): Modbus TCP/IP, Master/Slave HMI

Simulation

- Off-line simulation mode (runs on PC, simulated I/O)
- On-line simulation mode (runs on PC, connects to PLC)

New in Version 2.5!

- Support for latest generation of Nematron PowerView and PowerView/E models
- Easy program loading from CompactFlash® memory cards (PowerView/E models only)
- Improved Modbus TCP communications
- Multi-state, multi-language label libraries
- User-defined aliases for all registers
- 16-bit UNICODE fonts

* Symbol Factory is a product of Software Toolbox, Inc.