



Save water

Installing the Ariston under the sink puts hot water right where you need it – at the point-of-use, so there is no water going down the drain while waiting for hot water. Did you know over 80 billion gallons of water are wasted this way in the U.S. every year?

Save energy

Point-of-use water heating eliminates long runs of pipe and long waits for hot water at the tap.

6 year warranty

Ariston, world leader in point-of-use water heaters, manufactures millions of water heaters and offers the best warranty in the industry.

Superior design

Aesthetic on the outside, glass-lined on the inside. Quick economical

recovery and superior insulation for high efficiency.

Save space

By installing an Ariston point-of-use heater, you eliminate the need for a large, bulky storage tank.

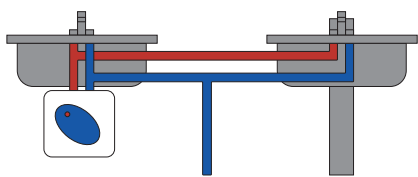
Easy to size

- 2.5 gallon for 1 sink
- 4 gallon for 2 sinks
- 6 gallon for 2 or more sinks

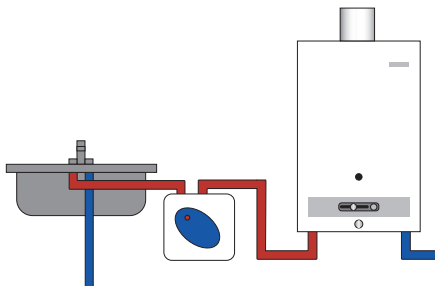
Versatile applications

- Homes, cottages, kitchenettes
- Stores and offices
- RVs and mobile homes
- Restaurants and hotels
- Service stations
- Warehouses and factories
- Boats

Hot water without the wait.



Independent Installation



In-line Installation
[shown with a tankless water heater]

Easy Installation

Save water by eliminating the wait for hot water to reach the tap. Simply tap into the cold water line and install the heater directly at the sink. No need for costly recirculating lines and pumps. And when you want to eliminate the wait for hot water but need more volume, install the Ariston heater in-line with a larger hot water source, such as a Bosch AquaStar tankless heater or a storage tank heater.

Lightweight and compact, the 2.5 and 4 gallon models plug into a standard 110 volt outlet. The 6 Gallon Plus requires hard wiring and can be mounted vertically or horizontally. All models include a mounting bracket.



Technical Data

SPECIFICATIONS	GL2.5	GL4	GL6 PLUS
Tank Volume	2.5 gallons	4 gallons	6+ gallons
Dimensions	14" x 14" x 10 1/4"	14" x 14" x 12 1/4"	17 1/2" x 17 1/2" x 14 1/2"
Recovery at a 90°F Rise	8 GPH*	10.5 GPH*	12.5 GPH*
Water Connections	1/2 inch NPT	1/2 inch NPT	3/4 inch NPT
Relief Valve	installed	installed	included
Multi-directional Mounting	no	no	yes

* Gallons Per Hour – First Hour Recovery

ALL UNITS

Voltage - 110/120 volts
 Amperage - 12.5 amps
 Heating Capacity - 1500 watts

Phase - single
 Temperatures - 65 - 145° F
 Operating Pressure - 150 psi



GL2.5



GL4



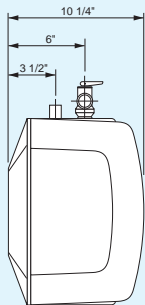
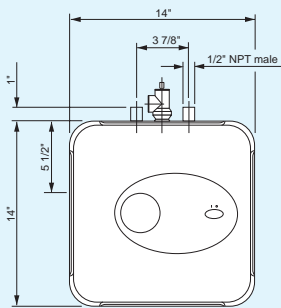
GL6 Plus



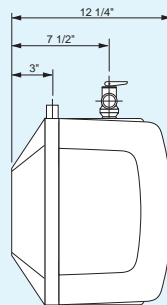
May be installed vertically or horizontally

Dimensions

GL2.5 & GL4

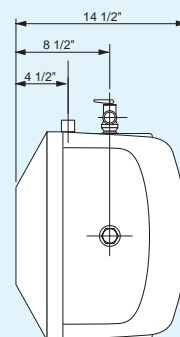
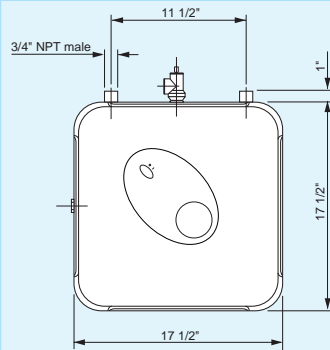


GL2.5



GL4

GL6 Plus



Ariston Features

- 6 year warranty on tank in both commercial and residential applications
- Glass-lined tank for longer life
- Mounts on wall or floor
- Temperature/pressure relief valve included
- 2.5 and 4 gallon models plug into standard 110 volt outlet
- 6 Gallon Plus requires hard wiring
- Meets ASHRAE 90.1 Standard



With more than 20 years of experience selling tankless and point-of-use water heaters, Controlled Energy Corporation provides unmatched knowledge and service to its customers.



Controlled Energy Corporation
 340 Mad River Park Waitsfield, VT 05673
 phone: 800-503-5028 fax: 802-496-6924
www.ControlledEnergy.com



Manufactured by
 MTS Group in Italy.