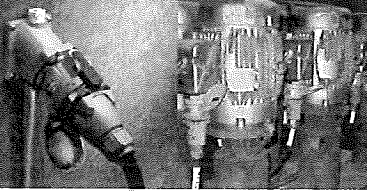


DSN30



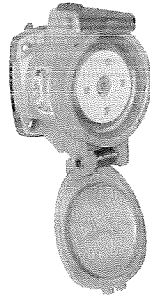
DECONTACTOR™ – 30A Switch Rated Plugs & Receptacles

Ratings

- Voltage**
600 VAC, 250 VDC
- Switch Ratings (AC Only)**
Branch Circuit & Motor Circuit Disconnect Switching
- Horsepower ratings**

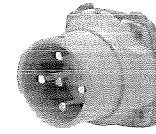
| | | |
|------|----|-------|
| 120V | 1Ø | 1 hp |
| 240V | 1Ø | 3 hp |
| 208V | 3Ø | 5 hp |
| 240V | 3Ø | 5 hp |
| 480V | 3Ø | 10 hp |
| 600V | 3Ø | 15 hp |
- Short Circuit Rating**
100kA Close & Withstand
Testing was performed with RK1 current limiting fuses sized at 400% of the highest full load motor ampacity associated with the devices hp rating.
- Environmental Ratings**
NEMA 4X, IP66 + 67
- Temperature Range**
Min -40°F/Max 140°F
See pg 188 for temps below -15°F or above 105°F.
- Wiring Capacity**
Min 14 AWG Max 8 AWG
Aux Contacts - Max 8 AWG
- Listings**
UL, CSA, IEC, CE*
* Contact Customer Service

Receptacle (female)



Don't forget to add installation accessories to your order

Inlet (male)



| Voltage | Polarity | Part # Poly |
|----------|----------|-------------|
| 120/208V | 3P+N+E | 63-34167 |
| 125V | 1P+N+E | 63-34075 |
| 125/250V | 2P+N+E | 63-34076 |
| 208V | 2P+E | 63-34162 |
| 208V | 3P+E | 63-34163 |
| 250V | 2P+E | 63-34072 |
| 250V | 3P+E | 63-34073 |
| 277V | 1P+N+E | 63-34045 |
| 277/480V | 3P+N+E | 63-34047 |
| 600V | 3P+N+E | 63-34147 |
| 480V | 2P+E | 63-34042 |
| 480V | 3P+E | 63-34043 |
| 600V | 2P+E | 63-34142 |
| 600V | 3P+E | 63-34143 |

| Voltage | Polarity | Part # Poly |
|----------|----------|-------------|
| 120/208V | 3P+N+E | 63-38167 |
| 125V | 1P+N+E | 63-38075 |
| 125/250V | 2P+N+E | 63-38076 |
| 208V | 2P+E | 63-38162 |
| 208V | 3P+E | 63-38163 |
| 250V | 2P+E | 63-38072 |
| 250V | 3P+E | 63-38073 |
| 277V | 1P+N+E | 63-38045 |
| 277/480V | 3P+N+E | 63-38047 |
| 600V | 3P+N+E | 63-38147 |
| 480V | 2P+E | 63-38042 |
| 480V | 3P+E | 63-38043 |
| 600V | 2P+E | 63-38142 |
| 600V | 3P+E | 63-38143 |

Other voltage configurations are available – contact customer service at 800.433.7642.

Main Options



Auxiliary/Pilot Contacts



Emergency Stop Pawl



Padlock Pawl



Self-Ejecting Devices*

* Requires straight insertion receptacle or inlet and self-ejecting plug or connector

Receptacle Options

Suffix

- With 2 Auxiliary/Pilot Contacts Recept # - 972
- Straight Insertion Recept # - A188
- Self-Ejecting Connector Release Recept # - 345-A188
- Emergency Stop Pawl Recept # - 375
- Padlock Pawl Recept # - 843
- Closed Lid Configuration Recept # - NC
- With Auxiliary Switch Recept # - 270

Inlet Options

Suffix

- With 2 Auxiliary/Pilot Contacts Inlet # - 972
- Self-Ejecting Plug Release Inlet # - 338-A188
- Straight Insertion Inlet # - A188
- With No Lockout Hole Inlet # - A155
- For Auxiliary Switch Inlet # - NNF

DSN30 Order Example:

To order 2 auxiliary contacts on an inlet and receptacle add -972 to the part numbers.

DSN30 Inlet 3P+E = 63-38043-972

DSN30 Receptacle 3P+E = 63-34043-972

Appropriate accessory part numbers must also be included on the order.

SordsElectric.com

800-929-2845

www.sordselectric.com

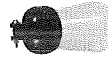
DECONTACTOR™ Series Switch Rated Plugs & Receptacles

Installation Accessories

800-929-2845

www.sordselectric.com

Handles



| NPT | Poly Handle | Cable Range | Poly Handle w/Clamp & Bushing | Nylon Handle |
|--------|--------------|---------------|-------------------------------|--------------|
| 1/2" | 61-3A013-12 | .20 - .83 | - | 61-3A013 |
| 3/4" | 61-3A013-34 | .750 - .875 | 1PM514 | - |
| 1" | 61-3A013-1 | .875 - 1.000 | 1PM516 | - |
| 1 1/4" | 61-3A013-114 | 1.000 - 1.125 | 1PM518 | - |
| | | 1.125 - 1.250 | 1PM520 | - |
| | | 1.250 - 1.375 | 1PM522 | - |

Notes: • Finger draw plates are recommended for easier connector closure on cord to cord assemblies.
• For available cord grips, see pgs 163-164.

NPT Guidelines

| Cable Range | NPT |
|--------------|--------|
| .062 - .5 | 1/2" |
| .187 - .75 | 3/4" |
| .437 - 1.10 | 1" |
| .750 - 1.375 | 1 1/4" |

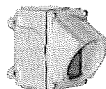
NPT sizes are determined by the cable diameter and third party cord grip.

Angles



| Nylon 30° Angle | Metal 30° Angle | Metal Angle FS/FD Box 30° | Metal Straight Adapter |
|-----------------|-----------------|---------------------------|------------------------|
| 61-3A027 | MA2 | MAFS2 | MS2 |

Junction Boxes



| NPT | Metal Box | Metal Box with Nylon Angle | Poly* Conduit Entry |
|--------|-----------|----------------------------|---------------------|
| 1/2" | MB312 | 61-3A053-080-12 | 61-3A023-12 |
| 3/4" | MB334 | 61-3A053-080-34 | 61-3A023-34 |
| 1" | MB31 | 61-3A053-080-1 | - |
| 1 1/4" | MB3114 | 61-3A053-080-114 | - |

* For poly devices only

Miscellaneous Accessories



* Set of Two (2)



For Male Devices Only



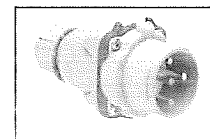
For Male Devices Only

| Finger Drawplates | Protective Cap | Padlockable Plug Cap |
|-------------------|----------------|----------------------|
| 61-3A346 | 61-3A126 | 61-3A826 |

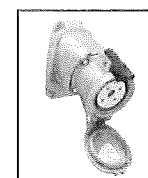
* Recommended for cord to cord assembly applications, for easier connector closure

Order Example

A typical order should include an inlet part number, a receptacle part number AND the matching handles, angles or other required accessories.



Male Inlet with Handle (Plug)
63-38043 + 61-3A013



Female Receptacle with Angle Adapter
63-34043 + 61-3A027