

DSN

Dimensions

Inlet – Provided in inches and millimeters

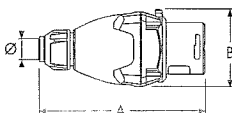
SordsElectric.com

800-929-2845

www.sordselectric.com

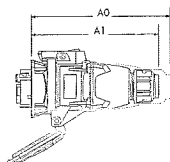
Dimensions are for reference only

Plug



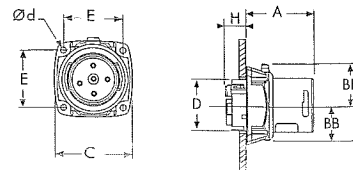
PRODUCT	A	B	Ø
DSN20	4.92	2.28	.27-.75
	125	58	7-19
DSN30/DSN24	5.71	2.68	.32-.90
	145	68	8-23
DSN60/DSN37	5.98	3.27	.32-1.25
	152	83	8-32

Inlet with connector on/off



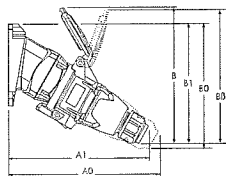
PRODUCT	A1	A0
DSN20	6.14	6.65
	156	169
DSN30/DSN24	6.65	7.32
	169	186
DSN60/DSN37	6.89	8.03
	175	204

Inlet



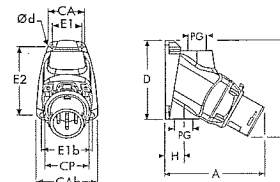
PRODUCT	A	BB	BH	C	D	E	H	Ød
DSN20	1.97	0.94	1.06	2.24	1.46	1.65	0.53	0.17
	50	24	27	57	37	42	13.5	4.2
DSN30/DSN24	1.97	1.26	1.42	2.64	2.28	1.89	0.51	0.18
	50	32	36	67	58	48	13	4.5
DSN60/DSN37	2.13	1.54	1.73	3.07	2.68	2.17	0.59	0.19
	54	39	44	78	68	55.2	15	4.8

30° inclined inlet/angle with connector on/off



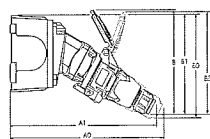
PRODUCT	A1	A0	B	B1	B0	B2
DSN20	7.28	7.72	6.38	5.94	6.18	
	185	196	162	151	157	
DSN30/DSN24	7.88	8.27	8.24	6.73	7.09	
	199	210	209	171	180	
DSN60/DSN37	8.03	9.06	9.25	7.01	7.60	8.39
	204	230	235	178	193	213

30° inlet/conduit box



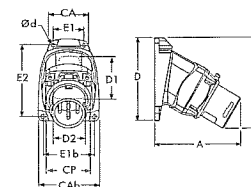
PRODUCT	A	B	CA	CAB	CP	D	E1	E1b	E2	H	PG	Ød
DSN20	4.53	4.45	1.77	2.68	2.24	3.54	1.42	2.20	3.07	1.48	0.50	0.18
	115	113	45	68	57	90	38	56	76	37.5		4.5
DSN30/DSN24	4.41	4.13	3.31	3.31	2.64	4.21	2.76	2.76	2.76	0.69	0.50	0.24
	112	105	84	84	67	107	70	70	70	17.5		6
DSN60/DSN37	5.20	5.04	3.50	3.50	3.07	4.80	3.03	3.03	3.46	0.94	0.75	0.26
	132	128	89	89	78	122	77	77	88	24		6.5

30° inclined inlet/angle/junction box with connector on/off



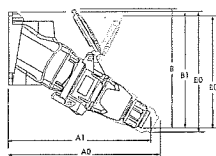
PRODUCT	A1	A0	B	B1	B0	B2
DSN20	9.88	10.31	6.38	6.06	6.30	
	251	262	162	154	160	
DSN30/DSN24	10.16	10.75	8.23	6.85	7.20	
	258	273	209	174	183	
DSN60/DSN37	10.51	11.54	9.25	7.13	7.72	8.39
	267	293	235	181	196	213

30° inlet/angle



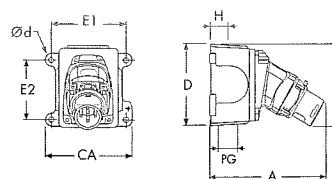
PRODUCT	A	B	CA	CAB	CP	D	D1	D2	E1	E1b	E2	Ød
DSN20	3.78	4.02	1.77	2.68	2.24	3.54	2.95	1.97	1.42	2.20	3.07	0.18
	96	102	45	68	57	90	75	50	36	56	78	4.5
DSN30/DSN24	3.66	4.49	2.99	2.99	2.64	4.21	2.56	3.74	2.48	2.48	3.74	0.22
	93	114	76	76	67	107	65	95	63	63	95	5.5
DSN60/DSN37	4.06	4.80	2.99	2.99	3.07	4.21	2.56	3.74	2.48	2.48	3.74	0.22
	103	122	76	76	78	107	65	95	63	63	95	5.5

30° inclined inlet/conduit box with connector on/off



PRODUCT	A1	A0	B	B1	B0	B2
DSN20	8.03	8.46	6.38	6.38	6.61	
	204	215	162	162	168	
DSN30/DSN24	8.43	9.02	8.23	6.38	6.73	
	214	229	209	162	171	
DSN60/DSN37	9.17	10.20	9.25	7.24	7.83	8.39
	233	259	235	184	199	213

inlet/angle/metal junction box



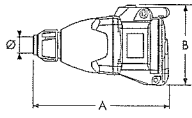
PRODUCT	A	B	CA	D	E1	E2	H	PG	Ød
DSN20	6.38	4.13	4.40	4.57	3.75	2.78	1.18	1.00	0.25
	162	105	111.8	116	95.3	70.6	30		6.4
DSN30/DSN24	6.14	4.61	4.40	4.57	3.75	2.78	1.18	1.00	0.25
	156	117	111.8	116	95.3	70.6	30		6.4
DSN60/DSN37	6.54	4.92	4.40	4.57	3.75	2.78	1.18	1.00	0.25
	166	125	111.8	116	95.3	70.6	30		6.4

Dimensions

Receptacle – Provided in inches and millimeters

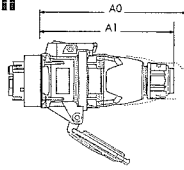
Dimensions are for reference only

connector



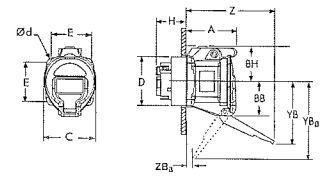
PRODUCT	A	B	D
DSN20	5.16	3.07	.27-.75
	131	78	7-19
DSN30/DSN24	6.38	4.06	.32-.90
	162	103	8-23
DSN60/DSN37	6.89	4.53	.32-1.25
	175	115	8-32

receptacle with plug on/off



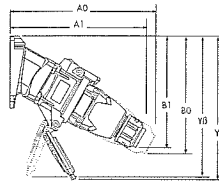
PRODUCT	A1	A0
DSN20	6.14	6.65
	156	169
DSN30/DSN24	6.65	7.32
	169	186
DSN60/DSN37	6.89	8.03
	175	204

receptacle



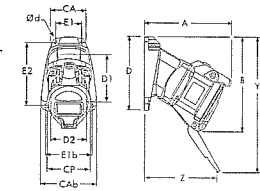
PRODUCT	A	BB	BH	C	D	E	H	YB	YB0	Z	ZB	Ød
DSN20	2.07	1.57	1.50	2.24	1.99	1.65	0.98	2.76	3.84	3.84	0.17	4.2
	52.7	40	38	57	50.5	42	25	70	97.5	97.5	4.2	
DSN30/DSN24	2.61	2.09	1.97	2.87	2.28	1.89	0.59	3.86	4.47	4.47	0.18	4.5
	66.2	53	50	73	58	48	15	98	113.6	113.6	4.5	
DSN60/DSN37	3.12	2.30	2.20	3.23	2.68	2.17	0.71	4.65	5.83	4.76	0.96	4.9
	79.2	58.5	56	82	68	55.2	18	118	148	121	24.4	4.8

30° inclined receptacle/angle with plug on/off



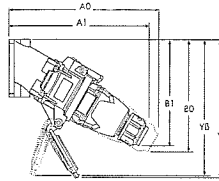
PRODUCT	A1	A0	B1	B0	Y	YB
DSN20	7.28	7.72	5.94	6.18	6.65	
	185	196	151	157	169	
DSN30/DSN24	7.68	8.27	6.73	7.09	8.23	
	195	210	171	180	209	
DSN60/DSN37	8.02	8.66	7.04	7.60	8.95	8.15
	204	220	178	193	230	207

30° receptacle/angle



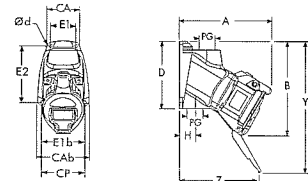
PRODUCT	A	B	CA	CAb	CP	D	D1	D2	E1	E1b	E2	Y	Z	Ød
DSN20	4.25	4.72	1.77	2.68	2.24	3.54	2.95	1.97	1.42	2.20	3.07	6.65	3.62	0.18
	108	120	45	68	57	90	75	50	36	56	78	169	92	4.5
DSN30/DSN24	4.69	5.55	2.99	2.99	2.87	4.21	2.56	3.74	2.48	2.48	3.74	8.23	3.39	0.22
	119	141	76	76	73	107	65	95	63	63	95	209	88	5.5
DSN60/DSN37	5.05	6.14	2.00	2.00	2.00	4.04	2.56	3.74	2.48	2.48	3.74	9.05	3.35	0.22
	136	156	76	76	82	107	65	95	63	63	95	230	85	5.5

30° inclined receptacle/conduit box with plug on/off



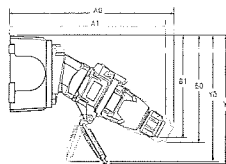
PRODUCT	A1	A0	B1	B0	Y	YB
DSN20	8.03	8.46	6.38	6.61	7.09	
	204	215	162	168	180	
DSN30/DSN24	8.43	9.02	6.38	6.73	7.87	
	214	229	162	171	200	
DSN60/DSN37	9.17	10.20	7.24	7.83	9.29	8.39
	233	259	184	199	236	213

30° receptacle/conduit box



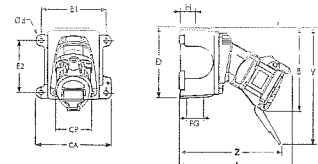
PRODUCT	A	B	CA	CAb	CP	D	E1	E1b	E2	H	PG	Y	Z	Ød
DSN20	5.00	5.16	1.77	2.68	2.24	3.54	1.42	2.20	3.07	1.48	0.50	7.09	4.37	0.18
	127	131	45	68	57	90	36	56	78	37.5		180	111	4.5
DSN30/DSN24	5.43	5.20	3.31	3.31	2.87	4.21	2.76	2.76	2.76	0.69	0.50	7.87	4.13	0.24
	138	132	84	84	73	107	70	70	70	17.5		200	105	6
DSN60/DSN37	6.50	6.38	3.50	3.50	3.23	4.80	3.03	3.03	3.46	0.94	0.75	9.29	4.49	0.26
	165	162	89	89	82	122	77	77	88	24		236	114	6.5

30° inclined receptacle/angle/ junction box with plug on/off



PRODUCT	A1	A0	B1	B0	Y	YB
DSN20	9.88	10.31	6.06	6.30	6.77	
	251	262	154	160	172	
DSN30/DSN24	10.16	10.75	6.85	7.20	8.35	
	258	273	174	183	212	
DSN60/DSN37	10.51	11.54	7.13	7.72	9.17	8.27
	267	293	181	196	233	210

receptacle/angle/metal junction box



PRODUCT	A	B	CA	CP	D	E1	E2	H	PG	Y	Z	Ød
DSN20	6.85	4.84	4.40	2.24	4.57	3.75	2.78	1.18	1.00	6.77	6.22	0.25
	174	123	111.8	57	116	95.3	70.6	30		172	158	6.4
DSN30/DSN24	7.17	5.67	4.40	2.87	4.57	3.75	2.78	1.18	1.00	8.35	5.87	0.25
	182	144	111.8	73	116	95.3	70.6	30		212	149	6.4
DSN60/DSN37	7.83	6.26	4.40	3.23	4.57	3.75	2.78	1.18	1.00	9.17	5.83	0.25
	199	159	111.8	82	116	95.3	70.6	30		233	148	6.4